



**PARADISE  
LANDSCAPES**

*images are subject to copyright*

Residence

**Plant List**

- A Viburnum
- B Boxwood
- C Purple Fringe
- D Indian Hawthorn
- E Dwf. Yaupon Holly
- F Red Salvia
- G Japanese Yew
- H Tam Juniper
- I BiColor Iris
- J Sago Palm
- K Knockout Rose
- L Big Blue Liriope
- M Purple Society Garlic
- N Var. Flax Lilly
- O Mealy Blue Sage
- P Orange Bulbine
- Q Mex. Feather Grass
- R Pink Scullcap
- S Blue Plumbago
- T Purple Lantana
- U Mex. Bush Sage
- V Pink Crepe Myrtle
- W Bermuda Grass
- X Asian Jasmine

**Landscape Materials**

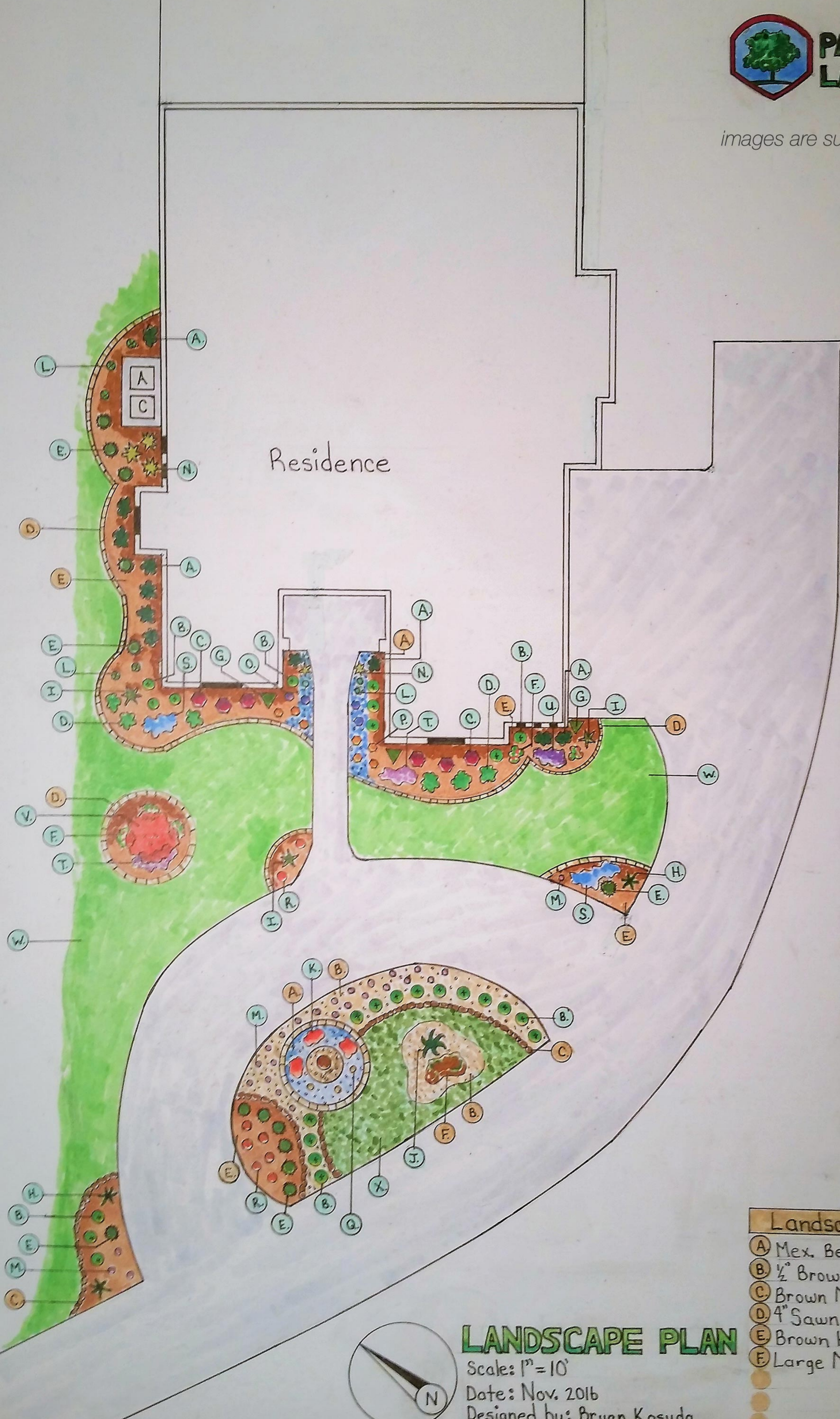
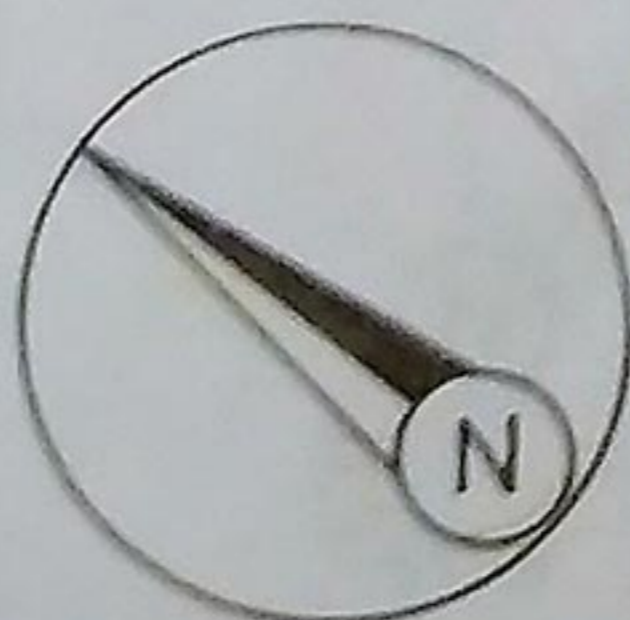
- A Mex. Beach Pebbles
- B 1/2" Brown Pea Gravel
- C Brown Moss Rock
- D 4" Sawn Stone Edging
- E Brown Hardwood Mulch
- F Large Moss Rock Boulder

**LANDSCAPE PLAN**

Scale: 1" = 10'

Date: Nov. 2016

Designed by: Bryan Kosuda



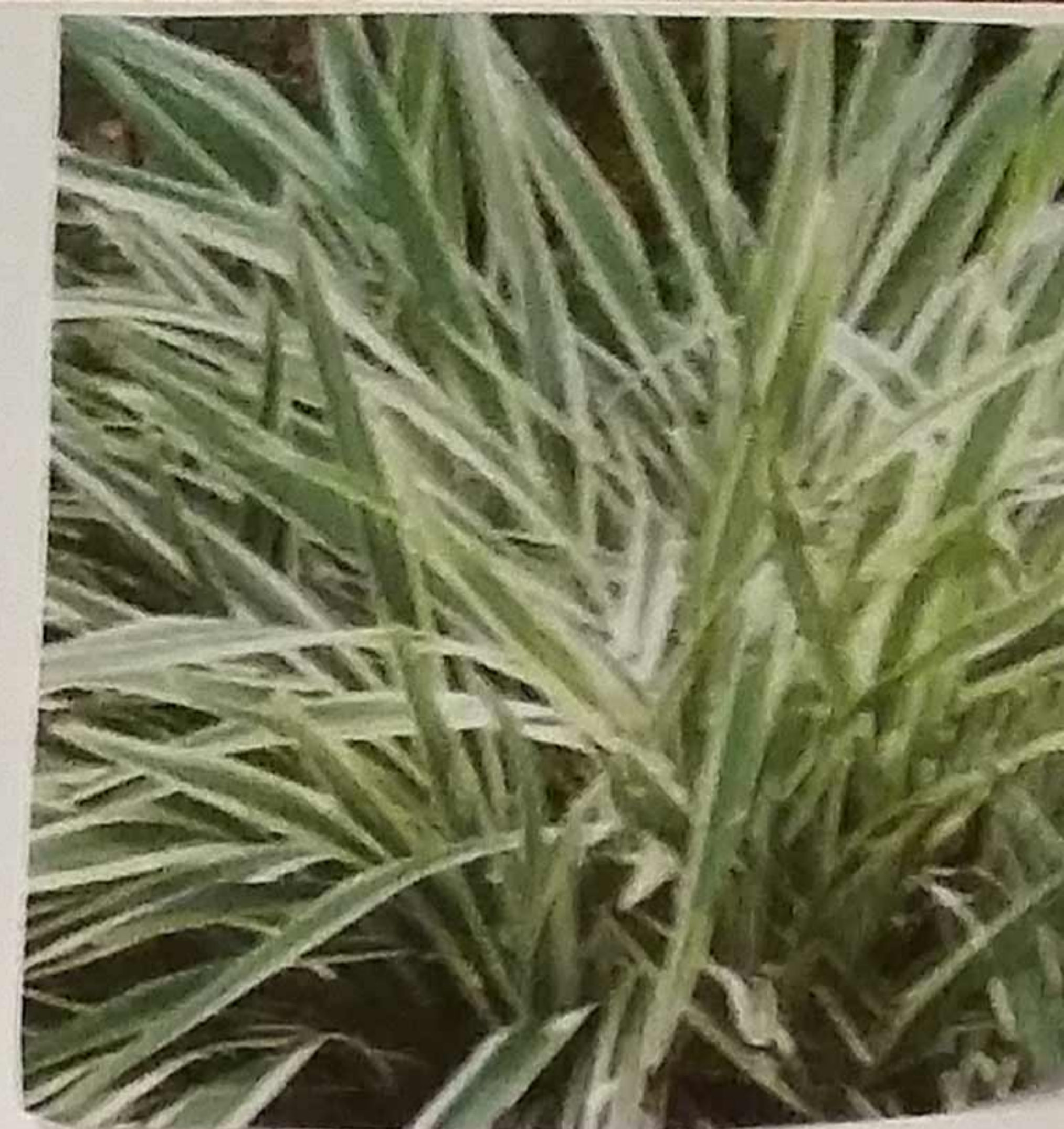




Indian Hawthorn  
3' compact evergreen, sun



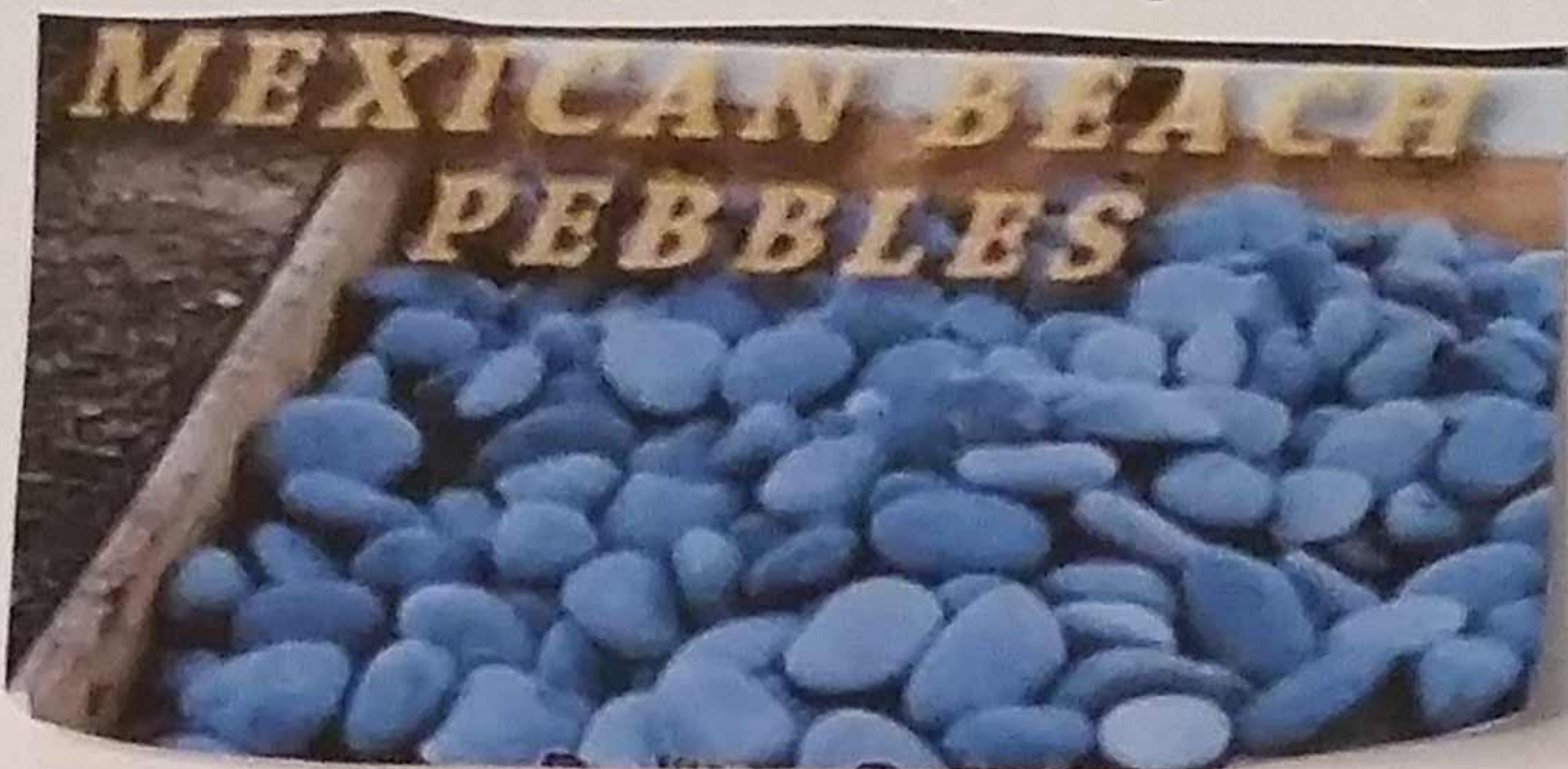
Purple Fringe, 3-4' Height, Evg., Accent, Part sun



Varigated Flax  
2-3' Height, Evg., Shade



Sago Palm  
3-5' Tall, Evg., Accent, Sun or shade



1-3" Blue/grey color, Accent rock



Asian Jasmine  
3-9" Height, Evg., Groundcover



Pink Skullcap  
6-12" Height, evg., mounding, sun



Japanese Yew, evg.  
8-10' Height, Columnar  
sun to part shade



Purple Society Garlic  
2' Tall, Evg. border, sun



Blue Plumbago sun-part sun  
3-4' Height, Dec., Accent



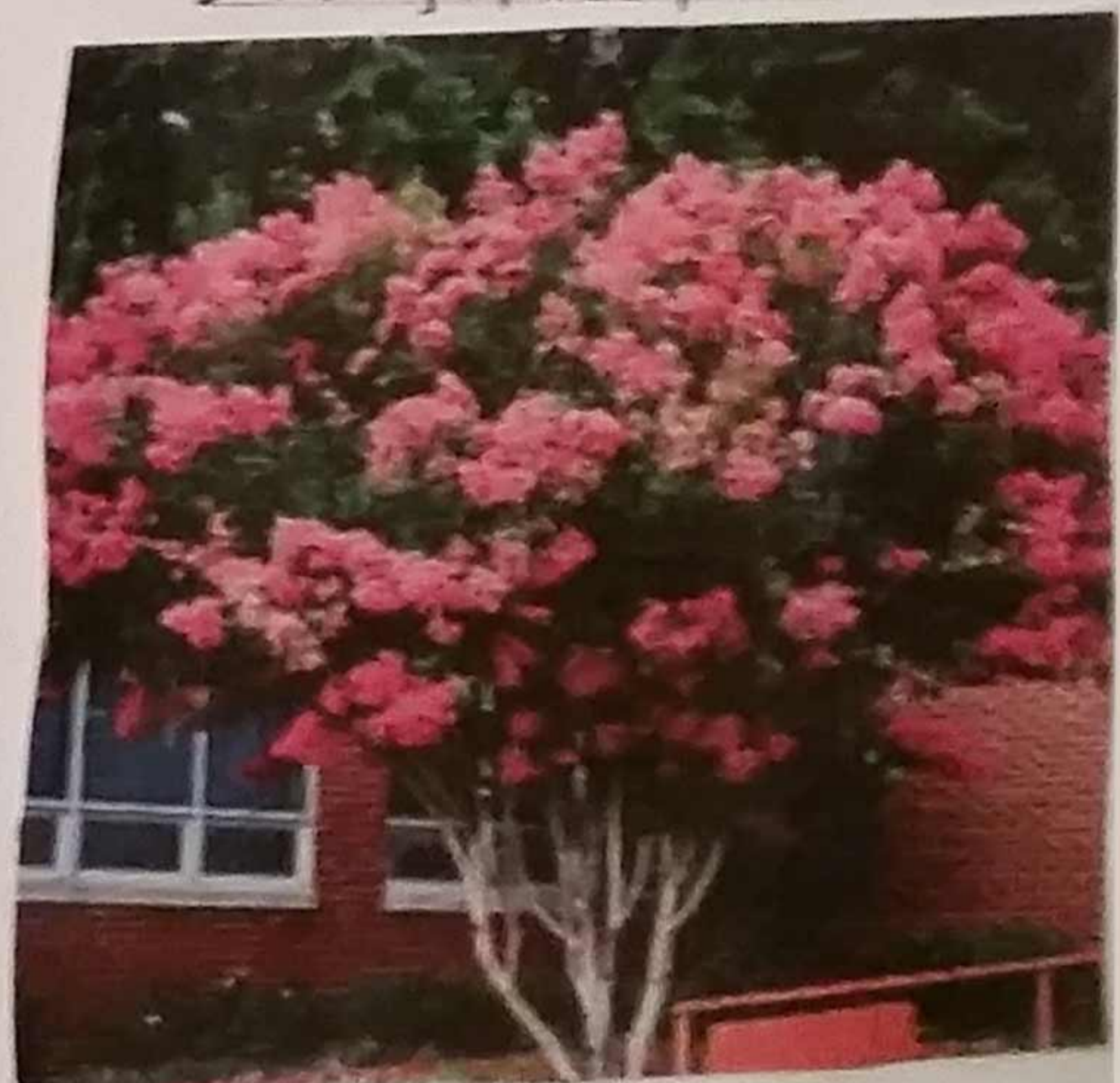
Viburnum, Evg.  
3-6' Height, Foundation, sun or shade



Bulbine, Evg., border, sun, 18" Tall



Dwf. Yaupon Holly  
1-4' Tall, Evg., Compact, border  
sun or shade



Crepe Myrtle, multi-trunk  
12-15' Height, Dec, sun, Ornamental



Mexican Bush Sage  
3-4' Tall, Dec, sun, Accent



BiColor Iris, Evg.  
3' Tall, Border or Accent sun-part sun



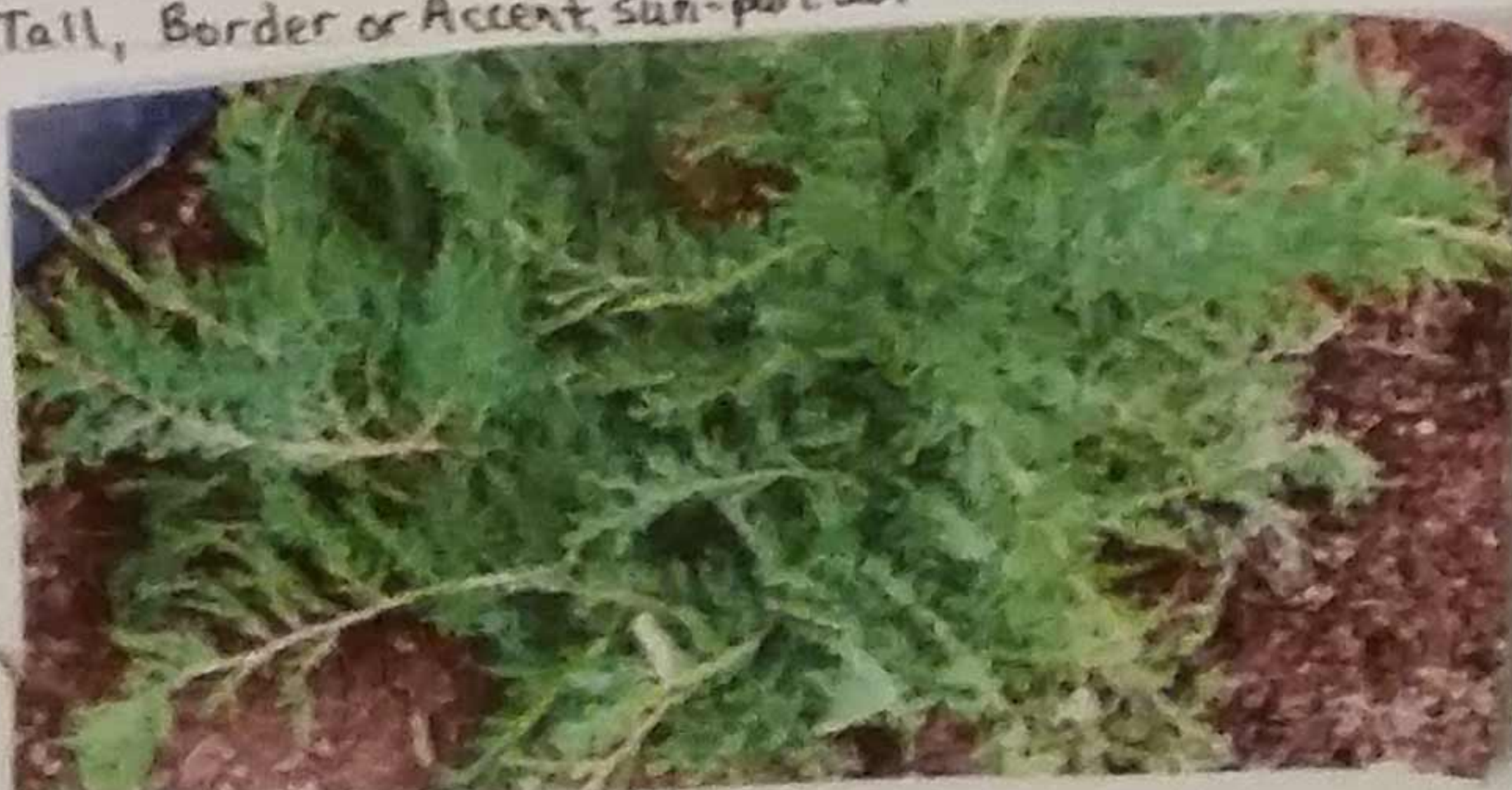
Japanese Boxwood, Evg.  
1-5' tall, Single or hedge, Found.



Mealy Blue Sage  
12" Tall, Semi-Evg., sun-part sun  
Border



Knockout Rose semi- evg.  
3' tall, Accent, sun



TAM Juniper, Evg, sun, Foundation